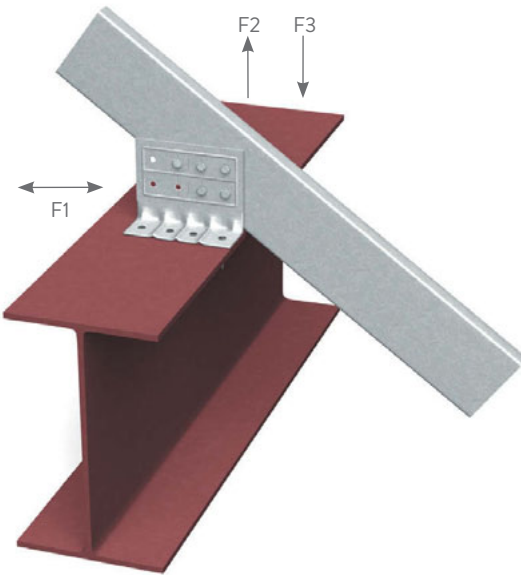


# UNI-CLIP™ END CLIP



Location Options with (4) Screws



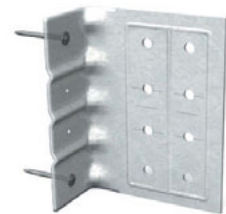
Option A

Option B

Option C



Location Options with (8) Screws



Location Options with (2) Anchors

## Uni-Clip™ ALLOWABLE LOADS (LBS)

Anchor type	Stud thickness and yield strength	No. anchors to structure	Number/Configuration of Screws to Stud Framing											
			8 Screws			4 Screws (Option A)			4 Screws (Option B)			4 Screws (Option C)		
			F1	F2	F3	F1	F2	F3	F1	F2	F3	F1	F2	F3
Buildex #12-24 Tek 5 Self-Drilling Screws to 3/16" Steel	20ga (33mil) 33ksi	2	529	1121	1121	192	561	561	177	561	561	272	561	561
		3	529	1121	1121	192	561	561	177	561	561	272	561	561
		4	529	1121	1121	192	561	561	177	561	561	272	561	561
	18ga (43mil) 33ksi	2	784	1227	1664	285	832	832	263	832	832	404	832	832
		3	784	1664	1664	285	832	832	263	832	832	404	832	832
		4	784	1664	1664	285	832	832	263	832	832	404	832	832
	16ga (54mil) 33ksi	2	1105	1227	1889	402	920	1172	371	1172	1172	569	1172	1172
		3	1105	1841	1889	402	1172	1172	371	1172	1172	569	1172	1172
		4	1105	2345	1889	402	1172	1172	371	1172	1172	569	1172	1172
PAF to 3/16" Steel*	16ga (54mil) 50ksi	2	1370	1227	1889	568	920	1417	523	1227	1209	804	1227	1655
		3	1560	1841	1889	568	1380	1417	523	1655	1209	804	1655	1655
		4	1560	2454	1889	568	1655	1417	523	1655	1209	804	1655	1655
	20ga (33mil) 33ksi	2	529	511	1121	192	383	561	177	511	561	272	511	561
		3	529	767	1121	192	561	561	177	561	561	272	561	561
		4	529	1022	1121	192	561	561	177	561	561	272	561	561
	18ga (43mil) 33ksi	2	784	511	1664	285	383	832	263	511	832	404	511	832
		3	784	767	1664	285	575	832	263	767	832	404	767	832
		4	784	1022	1664	285	767	832	263	832	832	404	832	832
	16ga (54mil) 33ksi	2	1105	511	1889	402	383	1172	371	511	1172	569	511	1172
		3	1105	767	1889	402	575	1172	371	767	1172	569	767	1172
		4	1105	1022	1889	402	767	1172	371	1022	1172	569	1022	1172
	16ga (54mil) 50ksi	2	1117	511	1889	568	383	1417	523	511	1209	804	511	1655
		3	1560	767	1889	568	575	1417	523	767	1209	804	767	1655
		4	1560	1022	1889	568	767	1417	523	1022	1209	804	1022	1655

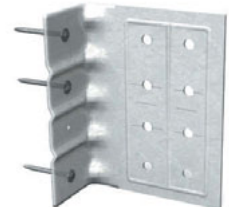
**Notes:**

- The 1/3 stress increase for wind shall not be used.
- Attach the Uni-Clip to the stud framing using Buildex #10-16 (min.) self-drilling screws.
- When using 2 anchors, use the outer-most marks on the short leg of the clips for anchor placement.
- Attach building anchors to the structure according to the manufacturer's instructions. Anchors shall be installed through the embossments on the scored line of the 1-1/2" leg of the clip.
- When using #12-24 for clips that have load combinations of F1, F2 and F3, use a linear interaction for combinations of F1 and F3, and a squared interaction for combinations of F1 and F2. When using PAFs, use a linear interaction for combinations of F1 and F3, and for combinations of F1 and F2.
- Capacities listed for PAFs are based on minimum PAF requirements listed in General Note #6 on page 9.
- It is the responsibility of the design professional to detail the project drawings for proper clip installation.

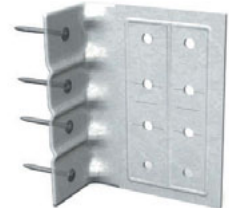
\*Uni Clip™ End Clip (UCEC) are distributed by Bailey Metal Products in Canada under permission granted by ClarkDietrich Building Systems. ClarkDietrich Uni Clip™ End Clip (UCEC) is a trademark of ClarkDietrich.



Location Options with (3) Anchors



Location Options with (3) Anchors



Location Options with (4) Anchors