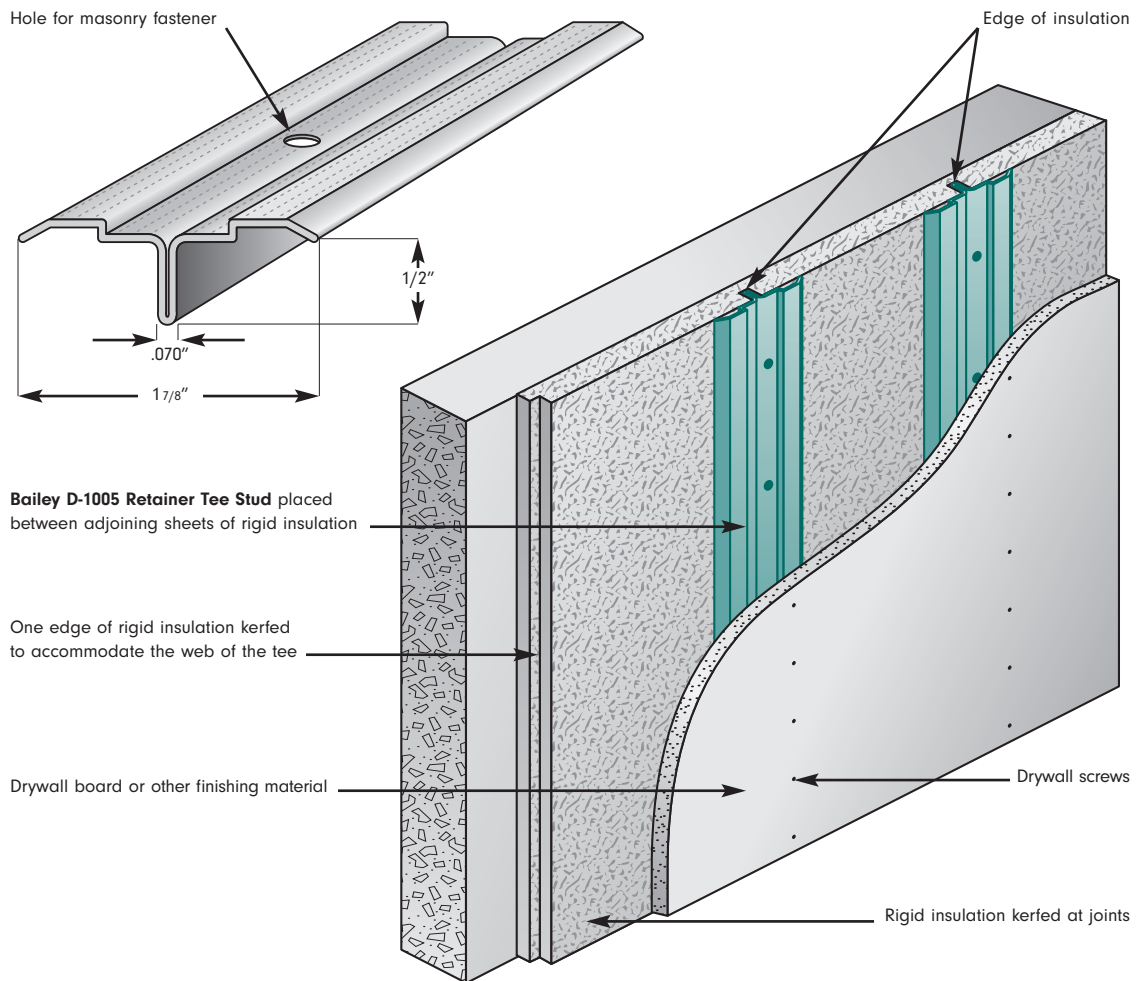


D-1005 RETAINER TEE STUD

The Bailey Retainer Tee is specifically designed to hold rigid insulation against a masonry wall. Bailey Retainer Tee is manufactured from zinc-coated steel with pierced holes for securing the "Tee" to the masonry wall. The top surface is knurled to easily accept screws to secure drywall. Fasten the Retainer Tee section through the insulation back to the masonry structure using suitable fasteners; type and spacing as specified. The Bailey Retainer Tee is placed between adjoining sheets of rigid insulation in a "kerf" (slot), formed along the edge of one of the sheets. The "kerf", with dimensions of 1/4" x 5/8", is sized to provide complete clearance for the web of the Bailey Retainer Tee. This will assure a tight joint between sheets for effective insulation.



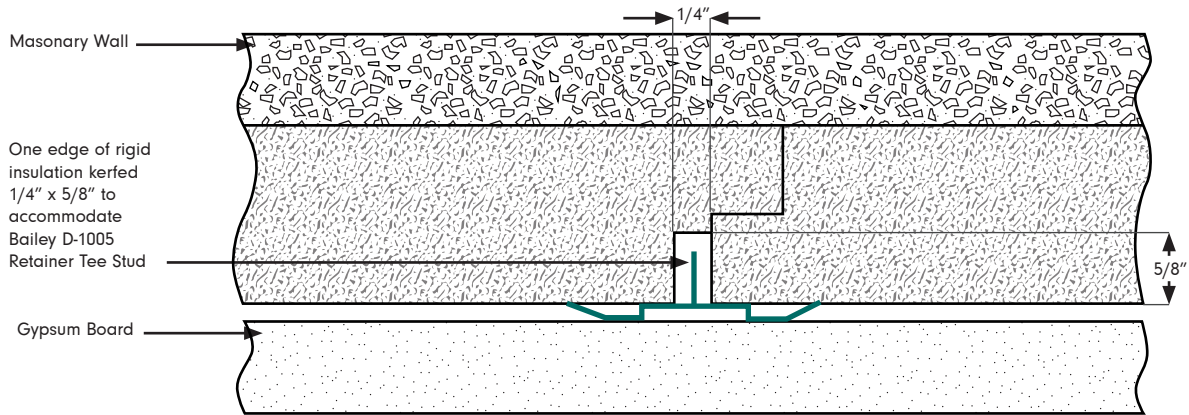
NOTE: Retainer Tee is normally at 24" on center to suit the width of the insulation.



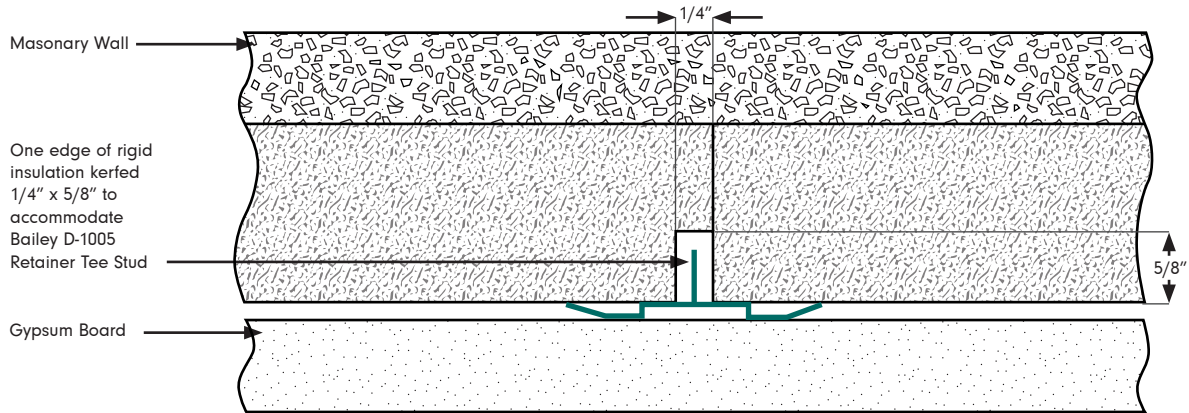
D-1005 RETAINER TEE STUD

CROSS SECTION VIEW OF INSTALLATION

SHIP LAP JOINT INSULATION



BUTT JOINT INSULATION



NOTE: The Retainer Tee can be installed with square edged or ship tap panels with or without the field kerf being applied. In the completed installation, the back of the gypsum board is tight to the face of the insulation (no air space exists).

CORNERS	RETURNS CAN BE ACCOMPLISHED BY USING 1" X 2" ANGLE
MATERIAL	ZINC COATED STEEL
LENGTH	8" (SPECIAL LENGTHS TO ORDER)

DRT07BW17-1000

BAILEY METAL PRODUCTS LIMITED

MONTREAL
525 Avenue Edward VII
Dorval QC H9P 1E7
Tel: (514) 735-3455
(800) 263-3455
Fax: (514) 735-5052

TORONTO
1 Caldari Road
Concord ON L4K 3Z9
Tel: (905) 738-9267
(800) 668-2154
Fax: (905) 738-5712

CALGARY
3924 27th Street NE
Calgary AB T6B 3G7
Tel: (403) 248-3536
(800) 665-2013
Fax: (403) 248-0288

EDMONTON
#101, 5710 Roper Road NW
Edmonton AB T1Y 5K7
Tel: (780) 462-5757
(800) 563-1751
Fax: (780) 450-3378

VANCOUVER
7715 Anvil Way
Surrey BC VCV 6A2
Tel: (604) 590-5100
(800) 818-2666
Fax: (604) 599-5371

sales@bmp-group.com • www.bmp-group.com