

# Installation Guide

## FURRING CHANNEL:

7/8" 25-gauge hemmed furring channel (7/8" fur, 1-1/4" top & 2-23/32" bottom)

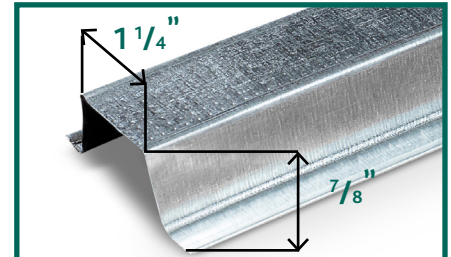
- When splicing, drywall furring channel should have 6 inch overlap in mid span (between two clips) secure with 18-gauge tie wire, or two 7/16" framing screws. If using in a fire rated/UL application; use only tie wire and no screws.

## BAILEY CD SOUND CLIP™:

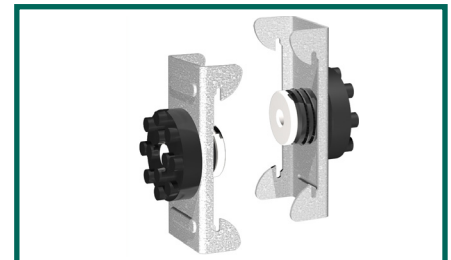
3" x 1-1/4" (clip only) maximum spacing 48" o.c. and maximum acoustical design load is 36 lbs.

## FASTENERS:

- CDSC to Wood: 64mm (2-1/2") # 8 minimum size coarse thread screw. (Recommended #12 or #10 x 2-1/2" hex head)
- CDSC to Steel: 38 mm (1-1/2") # 8 minimum size fine thread screw. (Recommended #12 or #10 x 1-5/8" hex head)
- DO NOT attach CDSC to framing members with nails; use only approved screws.



Furring Channel / Hat Channel



Bailey CD Sound Clip™

## WALLS: ONE AND TWO LAYERS OF 5/8" GYPSUM BOARD

- Bailey CD Sound Clip™ (CDSC) shall be 48" maximum o.c. (horizontal).
- Fasten the CDSC to the substrate with a fastener approved for a minimum pull-out and shear of 120lbs.
- Locate the first row of CDSC within 3-6 inches from the floor and within 3-6 inches from the top track, making sure the clip is attached to the studs and not the track.
- Snap in the drywall furring channel into the CDSC clips (horizontal for walls).
- Place 1/4" (minimum) shim on floor to fully support the gypsum board.
- Install the gypsum board from the bottom up leaving a 1/4" minimum gap around the perimeter of the wall.
- ONLY remove the shims after ALL the gypsum board is completely screwed to ALL the drywall furring channels. Make sure every screw (floor to-ceiling and wall-to-wall) is installed as required by the assembly design, in every layer of gypsum board before removing the shims at the floor. The shims are critical to ensure best results.
- Caulk around the entire perimeter of the gypsum board. Use fire and smoke rated acoustical sealant where required.

## CEILINGS: ONE AND TWO LAYERS OF 5/8" GYPSUM BOARD

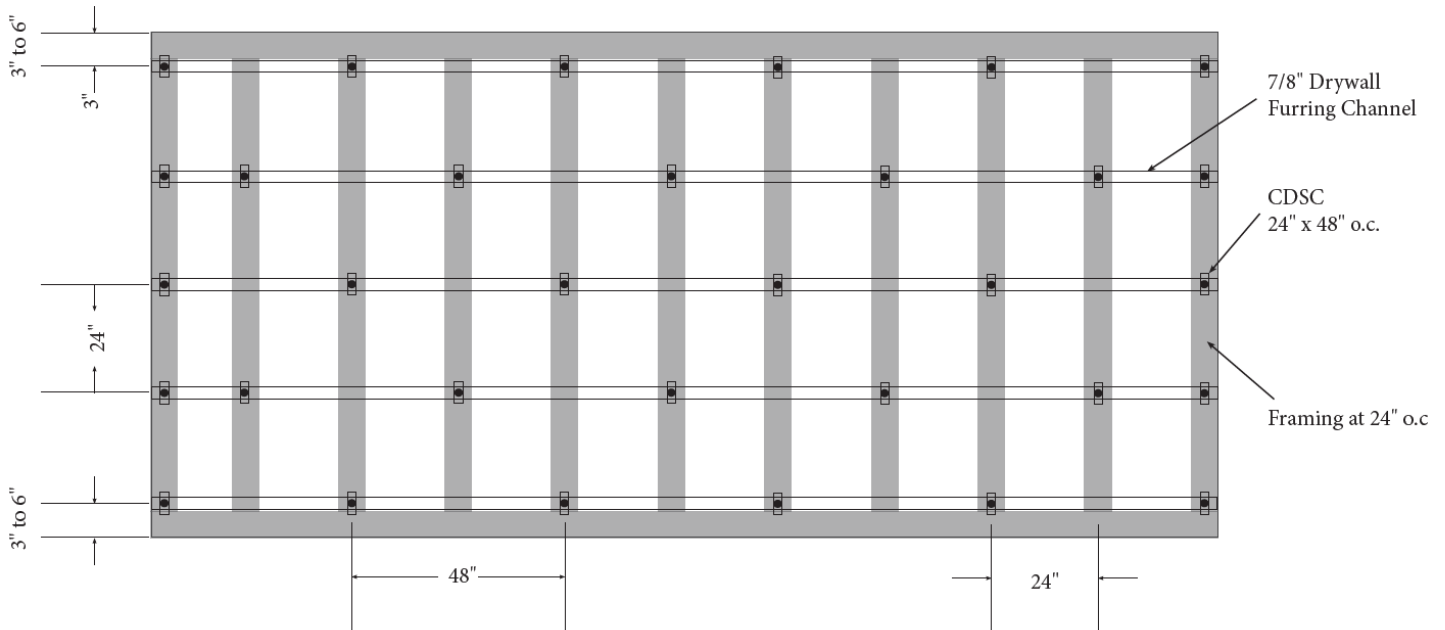
- CDSC shall be 48" maximum o.c.
- Fasten the CDSC to the substrate with a fastener approved for a minimum pull-out and shear of 120lbs.
- Locate the first row CDSC clips within 8" of the wall at each end of a run.
- Snap in the drywall furring channel into the CDSC clips. Channel max spacing at 24" o.c.
- Install the gypsum board from leaving a 1/4" min. gap around the perimeter of the ceiling.
- Caulk around the entire perimeter of the gypsum board. Use fire and smoke rated acoustical sealant where required.

## GENERAL INFORMATION:

- Bailey CD Sound Clip™, furring channel and gypsum board shall not carry heavy loads such as cabinets or bookshelves.
- Seal all potential air leaks with non-hardening acoustical caulking to achieve best noise control results. Use fire rated sealant where required.
- Refer to [www.UL.com](http://www.UL.com), or [www.clarkdietrich.com](http://www.clarkdietrich.com) for complete installation details on all fire resistive assembly designs.

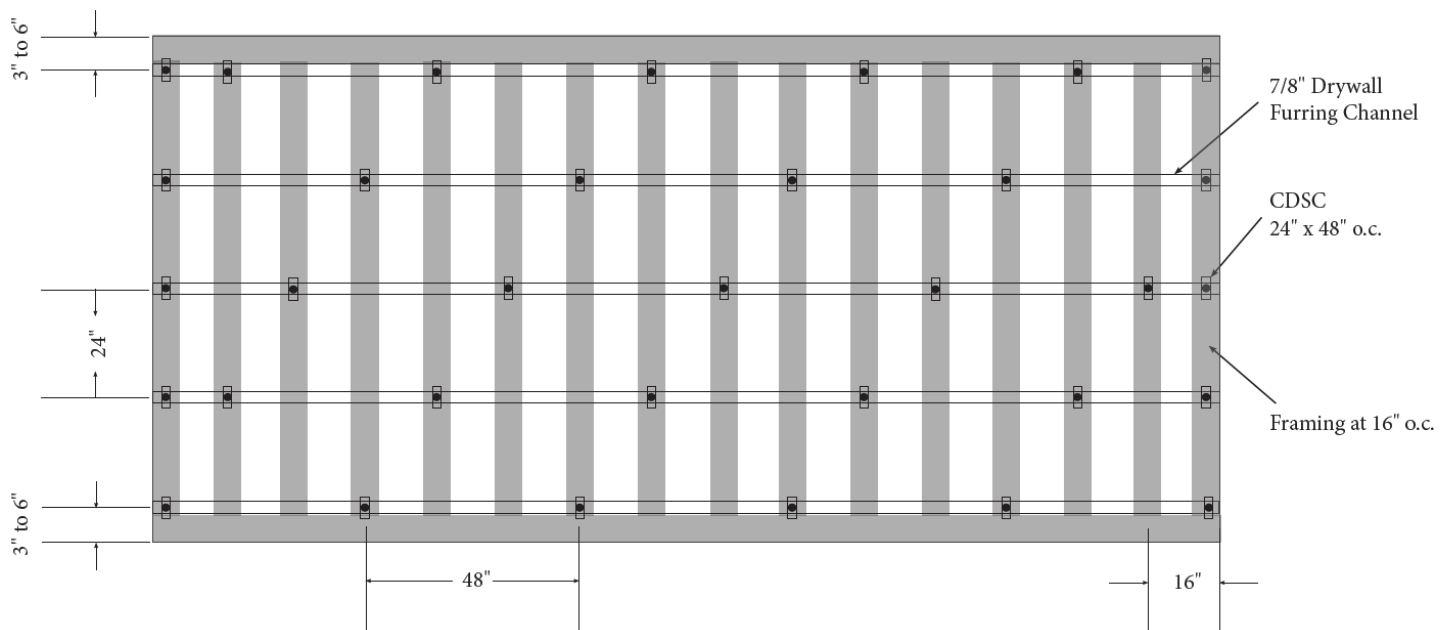
# WALL AND CEILING INSTALLATION GUIDE FOR WOOD OR STEEL FRAMING WITH FURRING ON 24" CENTERS

Wall or Ceiling framing at 24" o.c.,  
CDSC at 48" o.c., furring at 24" o.c., 1 or 2 layers of 5/8" gypsum board



NOTE: DRAWING NOT TO SCALE

Wall or Ceiling framing at 16" o.c.,  
CDSC at 48" o.c., furring at 24" o.c., 1 or 2 layers of 5/8" gypsum board



NOTE: DRAWING NOT TO SCALE

\*CD Sound Clip™ are produced by Bailey Metal Products in Canada under permission granted by ClarkDietrich