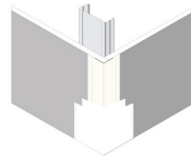


PLATINUM® PAPER-FACED DRYWALL TRIMS

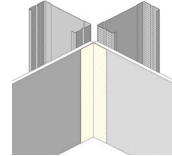
FEATURES & BENEFITS

- Platinum® patented paper technology is resistant to damages caused by sanding and drywall knives.
- The paper flanges create reinforcement against cracking caused by movement and shrinkage of framing members.
- Platinum® tape-on trims are easily installed using joint compound so nail popping is not a problem.
- Platinum® paper-face provides superb chip resistance due to excellent compound, texture, and paint adhesion.
- Platinum® paper-face greatly reduces photographing and flash through on bullnose assemblies.
- Galvanized coated steel provides exceptional resistance against corrosion, while the high quality chemistry provides maximum strength.
- Easy to adjust during application to ensure a clean, precise corner that is long lasting.
- Uses very little compound in comparison to some assemblies.
- Available in a wide variety of widths and profiles to suit most any wallboard application.
- Meets or exceeds specifications ASTM C1047.

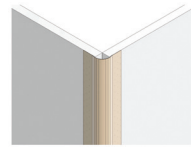
PROFILES AVAILABLE



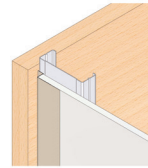
Square Nose
Tape-On Trims



Square Nose Tape-On
Inside Corners



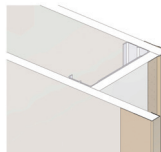
Bullnose Tape-On Outside
and Inside Corners



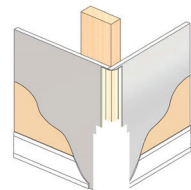
Reveal Trims 1/2" & 5/8"



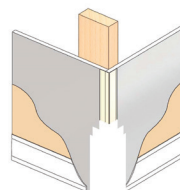
Tape-On L-Trims



J-Trims



Bullnose
Nail On Corners



Square Nose
Nail On Trims

For full product details
and dimensions please
scan the QR code or visit:
www.bmp-group.com



PLATINUM® PAPER-FACED DRYWALL TRIMS



MONTREAL

525 Avenue Edward VII
Dorval, QC H9P 1E7
Tel. (514) 735-3455
800-263-3455
Fax. (514) 735-5052

TORONTO

1 Caldari Road
Concord, ON L4K 3Z9
Tel. (905) 738-9267
800-668-2154
Fax. (905) 738-5712

CALGARY

3924 27th Street NE
Calgary, AB T1Y 5K7
Tel. (403) 248-3536
800-665-2013
Fax. (403) 248-0288

EDMONTON

101-5710 Roper Road NW
Edmonton, AB T6B 3G7
Tel. (780) 462-5757
800-563-1751
Fax. (780) 450-3378

VANCOUVER

7715 Anvil Way
Surrey, BC V3W 6A2
Tel. (604) 590-5100
800-818-2666
Fax. (604) 590-5105

sales@bmp-group.com
www.bmp-group.com

BAILEY
METAL PRODUCTS LIMITED

THE STRENGTH WITHIN

Patents:
USA 7,214,434 B2
Canada 2,471,325
Australia 2004202648
New Zealand 533606

PPBT11INX17-750



PAPER-FACED DRYWALL TRIMS



BAILEY
METAL PRODUCTS LIMITED

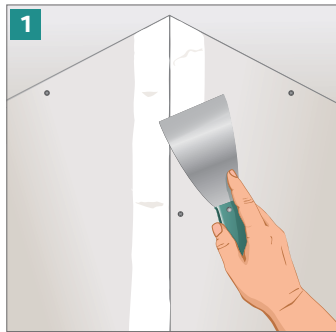


EASY TO INSTALL

OUTSIDE CORNERS

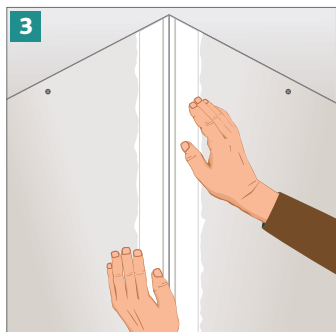
- 1 Apply a band of joint compound (Taping / All Purpose) 100mm (4") wide and 6mm (1/2") thick to each side of the corner using a finishing knife or a mechanical angle applicator.

Alternatively, Pass the bead through a hopper that applies sufficient amount of joint compound to the back of the bead

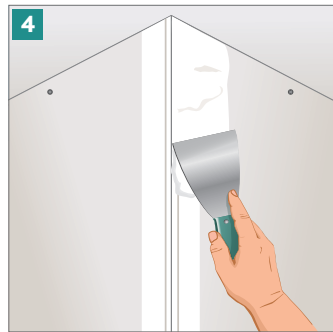


- 2 Cut corner bead to length required and position over the joint compound allow 1/2" at bottom for expansion and contraction of framing members.

- 3 Embed the corner bead firmly into the compound using a small finishing knife. Wipe the excess compound off from under the paper to eliminate all the air bubbles (be careful not to remove all of the compound). Allow to dry minimum 24 hours.

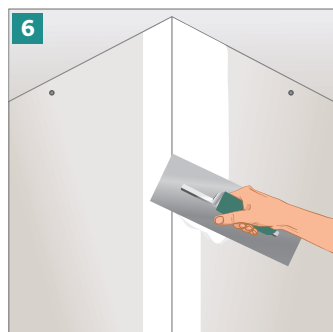


- 4 Using a large finishing knife, apply all-purpose compound in a band about 200mm (8") wide from the nose of the bead beyond the paper edge.



- 5 Level compound by drawing the knife along the bead with one edge of the blade riding on the nose of the bead and the other on the surface of the board. Repeat for the other side of the cornerbead. Allow to dry

- 6 Apply second coat once previous coat is dry. Feather the edges of each coat about 50mm (2") beyond the preceding coat.



- 7 Repeat process for third coat.

REMEMBER TO SAND BETWEEN COATS.



INSIDE CORNERS

Inside corners are installed similarly to outside corners except usually only one cover coat is required. An inside corner tool can be used to apply and smooth the compound if desired.

L-TRIM

L-Trim is installed similarly to outside corners except only one side is finished.

BULLNOSE CORNERS

Bullnose corners are installed similar to square corners with exception to the drywall edges not to exceed the corner of the framing substrate.

