

BAILEY® REDHEADER PRO™

ROUGH OPENING SYSTEM*

BAILEY® RedHeader PRO™ cuts your labour time in half

Building professionals require a solution that eliminates the labour intensive and expensive field assembly of rough opening components using standard wall framing members.

The new **BAILEY® RedHeader PRO™** cuts on-site labour by up to 50% by reducing the number of wall framing components required to frame windows and doors. The superior strength to weight ratio of the new system means *higher performance with fewer components*. The **BAILEY® RedHeader PRO™** one-piece header and jamb replaces conventional boxed headers and built-up jambs which require multiple studs, tracks and screws.

BAILEY® RedHeader PRO™ Rough Opening System consists of three components:

- Header
- Jamb stud
- Header bracket

APPLICATIONS

- Exterior curtain wall headers and jambs
- Interior non-load bearing headers and jambs

BENEFITS

- Reduces assembly time by up to 50% by eliminating built-up jambs and boxed or lay-in headers
- ClarkDietrich RedHeader PRO™ header bracket with predrilled holes provides an easy connection between the header and the jamb
- Eliminates "capped" members, allowing drywall screws to drive through only one thickness of material
- Opened jamb and headers studs do not require pre-insulating prior to installation
- Ready to install: Precut headers and jambs to specified lengths eliminate field cutting and reduce waste
- Offers a flush framing base that provides better quality drywall finish
- Extra long 1" return legs allow for ease of attachment
- Green building material: Makes the buildings more environmental friendly by reducing material and waste

INSTALLATION

- Fasten the RedHeader PRO™ header bracket to the jamb stud at header location with 4 screws using the pre-punched screw holes
- Slide the header into the header bracket and fasten it to the bracket with 4 screws
- For more information please see installation video on www.bmp-group.com/products/RedHeader

ORDERING INFORMATION

- Submit your list of materials to your sales representatives
- Custom length header and jamb studs are available
- Headers must be ordered 1/2" shorter than the opening to accommodate the attachment clip (header length = inside of jamb to inside of jamb minus 1/2")

* Bailey RedHeader PRO™ headers and jambs are produced by Bailey Metal Products in Canada under permission granted by ClarkDietrich Building Systems. RedHeader PRO™ is a trademark of ClarkDietrich.

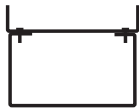


REDHEADER PRO™

ROUGH OPENING SYSTEM*



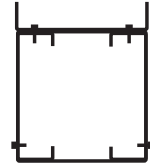
RedHeader header



REPLACES
Lay-in header



OR
Boxed header



- 1 header stud
- 1 track for cripple attachments
- 2 screws

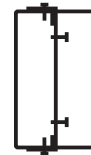
- 1 stud
- 2 tracks
- 4 screws

- 2 studs
- 2 tracks
- 4 screws

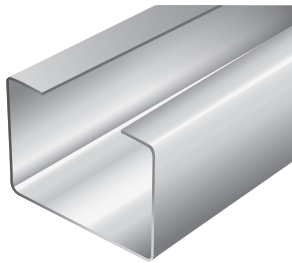
RedHeader jamb



• 1 header stud **REPLACES** Built-up jamb

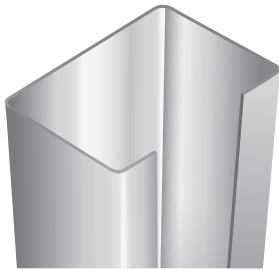


- 2 studs
- 1 track
- 4 screws



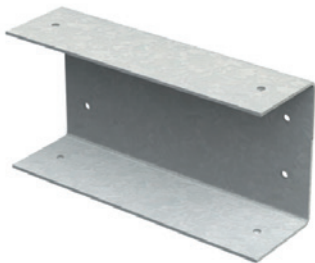
REDHEADER PRO™ HEADER

| PRODUCT | GAUGE | MILS | DEPTH (in) |
|---------|-------|------|---|
| Header | 20 | 33 | 3 5/8 4 6 8 (not available for 20ga) |
| | 18 | 43 | |
| | 16 | 54 | |
| | 14 | 68 | |
| | 12 | 97 | |



REDHEADER PRO™ JAMB

| PRODUCT | GAUGE | MILS | DEPTH (in) |
|---------|-------|------|---|
| Jamb | 20 | 33 | 3 5/8 4 6 8 (not available for 20ga) |
| | 18 | 43 | |
| | 16 | 54 | |
| | 14 | 68 | |
| | 12 | 97 | |



REDHEADER PRO™
HEADER BRACKET

| PRODUCT | GAUGE | SIZE (in) | FITS REDHEADER PRO™ SYSTEM SIZE (in) |
|----------------|-------|-----------|--------------------------------------|
| Header Bracket | 20 | 3-1/2 | 3-5/8 with 3" flange |
| | | 3-1/2 | 3-5/8 with 3-1/2" flange |
| | | 3-7/8 | 4 with 3" flange |
| | 14 | 3-7/8 | 4 with 3-1/2" flange |
| | | 5-7/8 | 6 with 3" flange |
| | | 5-7/8 | 6 with 3-1/2" flange |
| | 12 | 7-7/8 | 8 with 3" flange |
| | | 7-7/8 | 8 with 3-1/2" flange |

sales@bmp-group.com | www.bmp-group.com



BAILEY
METAL PRODUCTS LIMITED

MONTREAL
800-263-3455

commande@bmp-group.com

TORONTO
800-668-2154

tor-orders@bmp-group.com

CALGARY
800-665-2013

cal-orders@bmp-group.com

EDMONTON
800-563-1751

edm-orders@bmp-group.com

VANCOUVER
800-818-2666

van-orders@bmp-group.com

THE STRENGTH WITHIN



RHP050SN17_2000